

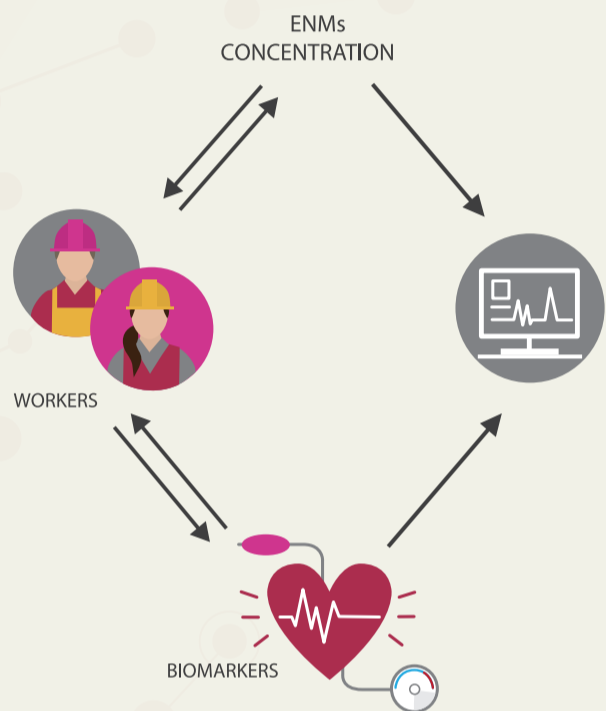
NanoExplore

Integrated approach for exposure and health effects monitoring of engineered nanomaterials in workplaces and urban areas

OBJECTIVES

Develop and demonstrate the feasibility of an integrated approach to monitor exposure and health effects derived from engineered nanomaterials, which consists of:

- A wireless sensor network that monitor the concentration of ENMs and relevant physical environmental conditions
- A web-based data management tool aimed at supporting health surveillance of data on the concentration of ENMs
- A panel of candidate biomarkers of nanomaterial exposure and effects via inhalation and a risk analysis of possible effects on human health



PROJECT

NanoExplore is a 4 years EU Life project that runs from September 2018 to September 2022. It has a budget of about 2.2 million.

PROJECT PARTNERS



This project is part funded by the European Commission Life programme with grant agreement LIFE17 ENV/GR/000285

FIND OUT MORE



info@lifenanoexplore.eu



twitter.com/LFnanoexplore